

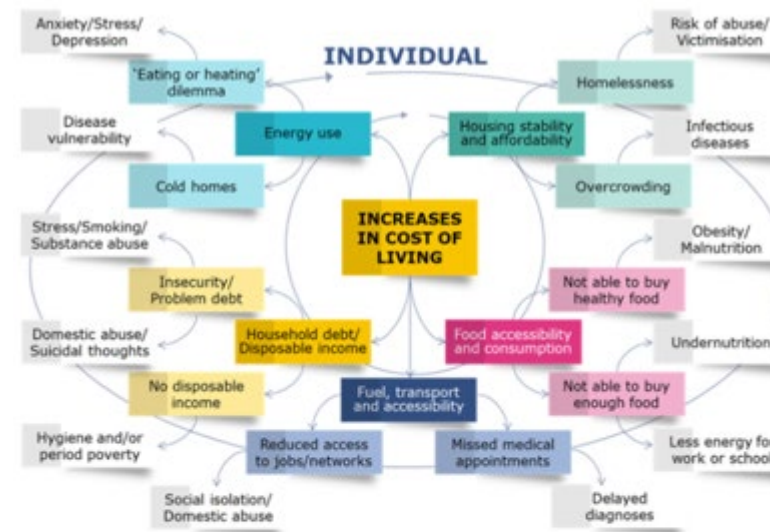
TACKLING DEPRIVATION

SS24 Progress Update

Why these areas?

Area Profiles:

- The three LSOAs were ranked in the top-10% most deprived LSOAs in Wales in WIMD 2019, due to being ranked in the 4 Domains of Deprivation with the largest weighting.
- There has been a consistent increase in the number of people in receipt of Universal Credit (UC) in the Vale, both in and not in employment. These three LSOAs have amongst the highest numbers of people in receipt of UC, with the majority of these not in employment.
- There is an 8-person gap between those with a GP recorded chronic health condition (per 100 people), in Gibbonsdown 2 and an 11.8-person gap between those with a GP recorded mental health condition in Court 3 than the Vale average.
- People in Buttrills 2 are much more likely to die prematurely (under the age of 75) than the Vale average.
- 25% of the Gibbonsdown 2 population is aged under 15 years, the second highest of all Vale LSOAs. 22% of the Court 3 LSOAs are aged under 15 years.
- Only Buttrills 2 at 23% has a population aged 65 and over which is in line with the Vale of Glamorgan average of 22.1%



Progress to date

Engagement

To date the project has engaged with 190 members of the community and 27 leaders of community groups (not including council led services)

Community:

- Warm spaces, food pantries, Councillors, local businesses
- Internal Council depts
- Local Schools including Heads of school and Family Engagers
- Local events

Project support/collaboration:

- Long Term Towns Fund
- PLC Thriving Communities
- UHB Amplifying Preventions
- GVS/NRW network project
- Youth Bus pilot
- Oakfield Primary Beacon

Professional:

- Health board
- GVS
- NRW
- SWP
- Keep Wales Tidy
- Age Connects
- Cardiff Bus

Assets

Spaces	People	Resources	Culture
<ul style="list-style-type: none">• Parks• Warm spaces• Community gardens• Splash pad• The Pod• CEC	<ul style="list-style-type: none">• Family engagers• Councillors• Housing and C4W/Celt+ staff	<ul style="list-style-type: none">• Primary schools• Flying start• Specialist units• Barry RFC• Food pantries• Communities for work• Central Library• Aberaeron Hub	<ul style="list-style-type: none">• Community• Welcoming• Pride• Family centred• Supportive• Close knit

Common Themes



Successes

- Networking Group
- Street furniture in Gibbonsdown
- Youth Service Bus Funding
- NHS Collaboration
- Oakfield Primary Hub
- Pencoedtre High School Food Tech Funding

Challenges

- Data
- Domestic Abuse
- Time

PARTNERSHIP PROJECT UPDATES

Pencoedtre: a Thriving Community

Tackling the inequalities and inequities across our most deprived communities through a Community Focused Schools and Local Authority Partnership approach with a focus on food, physical activity and school readiness.

The three workstreams to tackle the issues are:

- Safe
- Healthy
- Secure



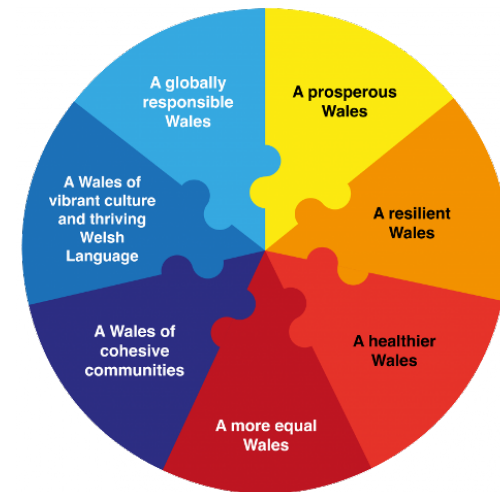
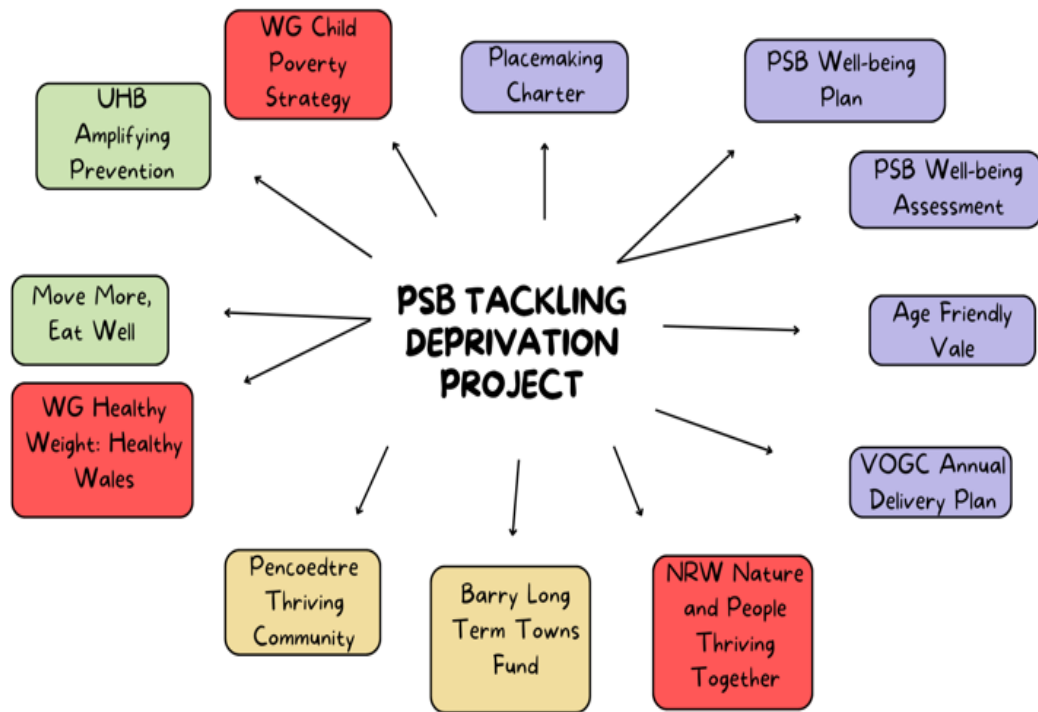
Amplifying Prevention C&VUHB



The focus of Amplifying Prevention is on combatting identified health inequities across Cardiff and the Vale. The work aims specifically to work in collaboration to:

- Improve uptake and close the gap in childhood immunisation rates
- Improve uptake of bowel screening rates.
- Further enhance implementation of specified actions in the Move More Eat Well Action Plan

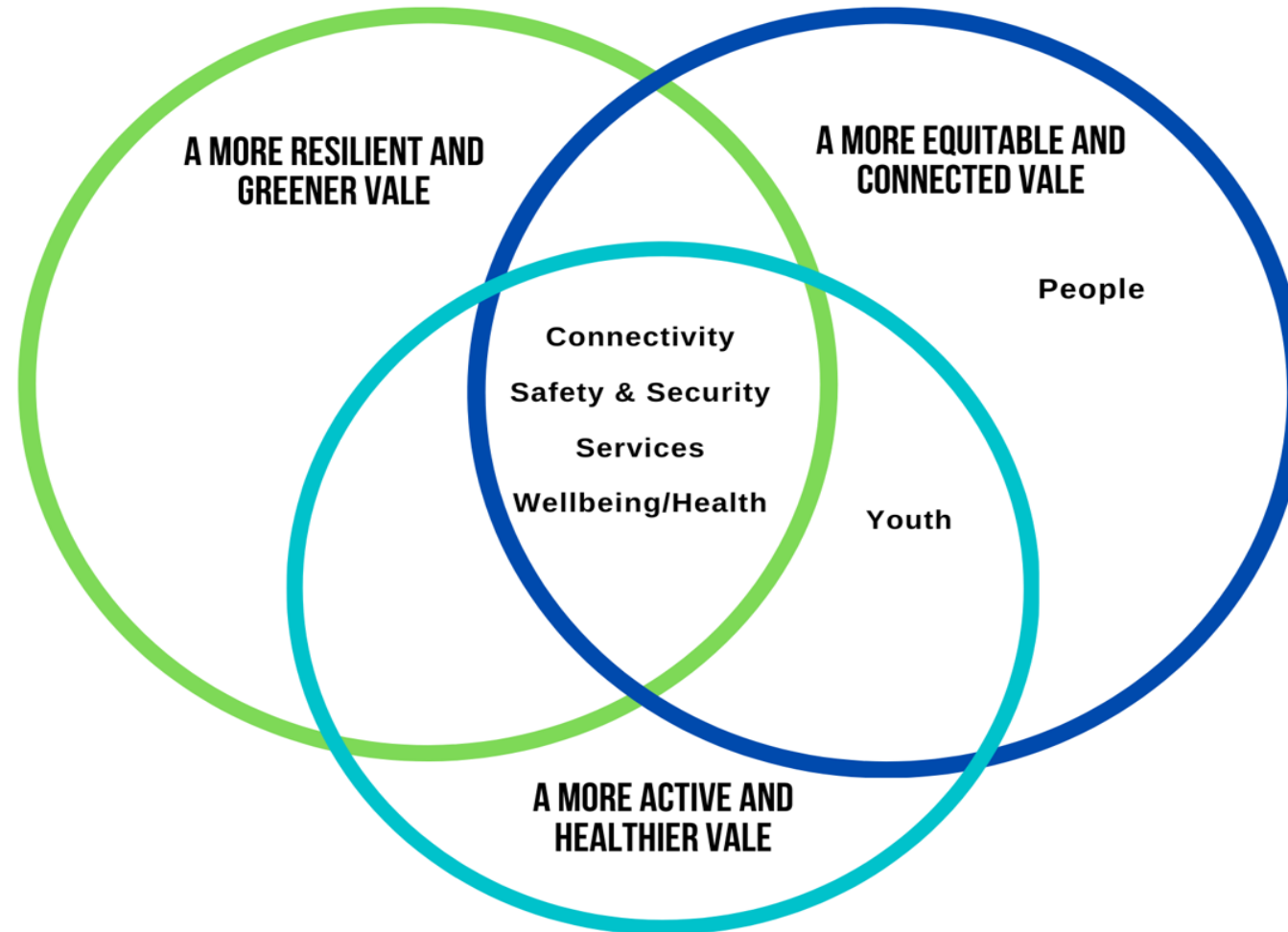




** All linked to the Future Generations Act Wellbeing Goals

STEERING GROUP PROGRESS

Wellbeing Goals



Next Steps

Launch of brand: web page, press release

Completion of first stage engagement

Creation of workstreams

Focussed action plans



QUESTIONS

THANK YOU!