



Vale of Glamorgan Scrutiny Meeting

22nd October 2024



CCR Energy's Mission

To support our Region to thrive by offering new green energy enabled development platforms that inspires innovation and supports the creation of next generation employment opportunities

Utilising the strategic site to stimulate and maximise investment opportunities through co-investment models, joint ventures and attracting inward investment

Maximising all added value that can be secured through contracts, business engagement, relationships, partner intervention, public support

Enabling the creation of 5,000 new jobs (both direct & indirect) through maximising the capacity of the developable land and regional supply chains.

Contributing to a 5% uplift in GVA, creating high-value jobs through stimulating and being a catalyst for the emerging green economy

Accelerating decarbonisation in the CCR economy, support productivity and unlock innovation and opportunity.



Refresh

Site Purchase & Demolition

- Site Acquired March 2023
- Demolition Procurement started Oct 2022
- Procurement closed April 2023
- Awarded Published June 2023
- Demolition Contract Signed Feb 2024

CCR Energy

- Recruitment of Staff (14 FT/PT)
- Establishment of Offices (ACE2)
- Site Split (Demolition / Other)
- Conservation and Biodiversity
- Development of Opportunities
- Engagement with Private Sector
- Strategic Partner Development

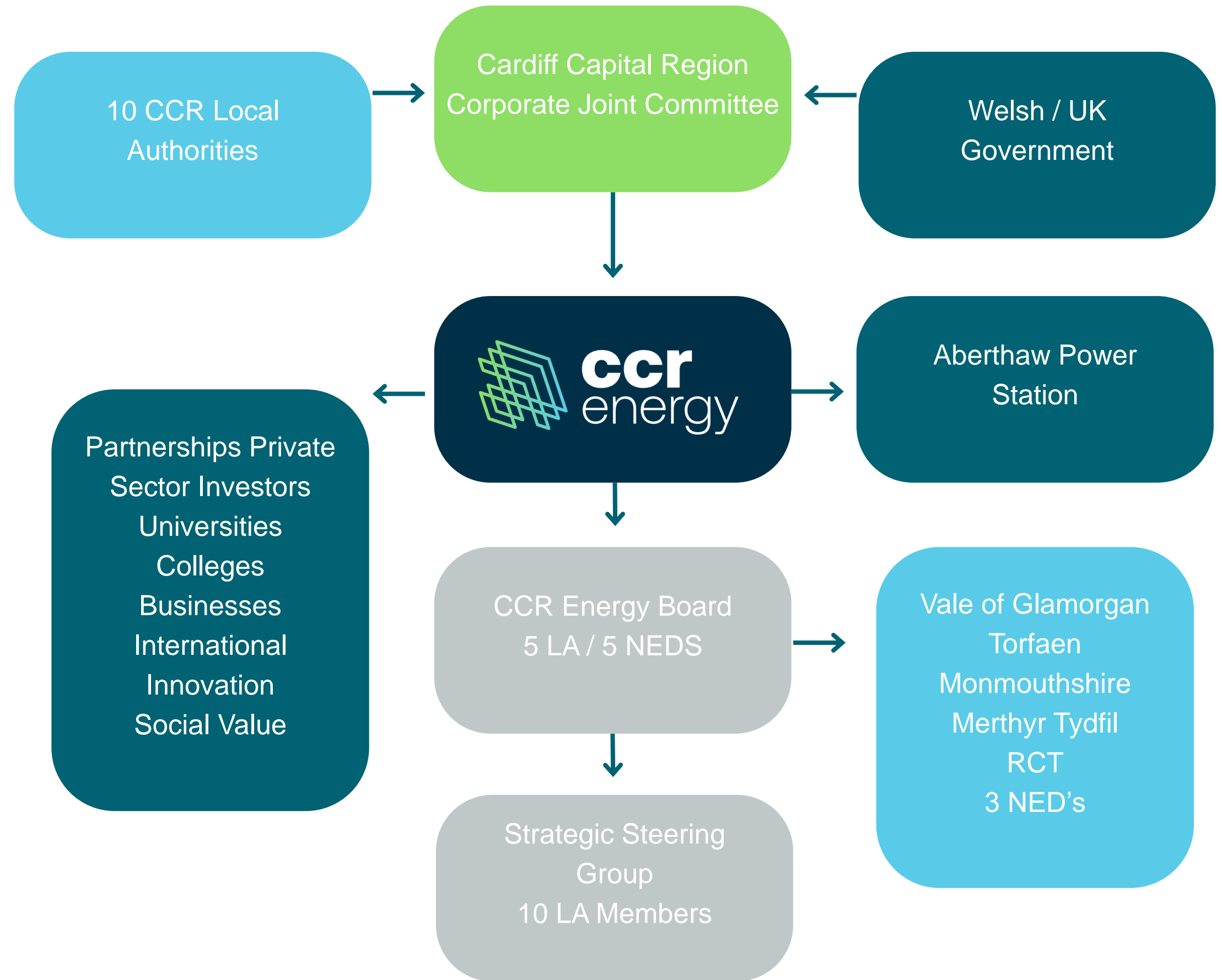
Technical Support

- WSP, Demolition Supervisor (PM)
- ARUP, Masterplan/Technical Advisor
- Geldards, Legal Advisor



Governance Structure

- **Board Recruitment Summer 2023**
- **Established Strategic Steering Group**
- **Board Inaugural Meeting July 2023**
- **Business Plan endorsement September 2023**
- **Business Plan approval (CCR Cabinet) December 2023**



Aberthaw Power Station

Information:

Size: 507 Acres, circa.
Up to 300 Developable Acres
Existing: Coal Fired Power Station
(Decommissioned)
Location: Proximity to Key
Economic Growth Areas

Assets & Infrastructure

Operational Railhead (Loop)
2 x Sub-Stations (275KV & 132KV)
Tidal Range (over 8m, up to 1GW)
Pulverised Fuel Ash (18m tonnes)
Location (Anchor Wider Region)



Business Plan Goals

Develop Masterplan

Commercial Strategy

Operational Structures

Develop Delivery Plan

Stakeholder
Engagement

Zero Tolerance
approach for H&S



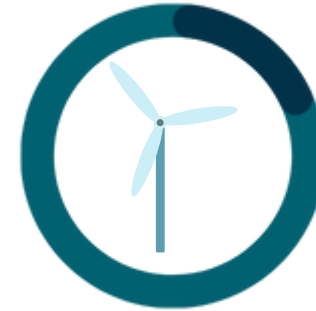
Assessing proposed users/uses

The CCR Energy team are currently assessing proposed users/uses for the site. Engaging with a wide network of experts across these various industries. Each decision regarding the future of Aberthaw are being thoroughly explored to ensure every aspect contributes to generating a sustainable circular economy.

You will be able to stay up to date by visiting ccrenergy.com (website coming soon).



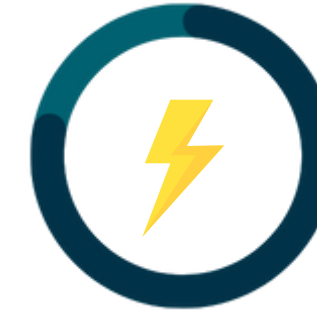
Solar



Wind



Tidal



SMR/MMR



PFA



Green Hydrogen



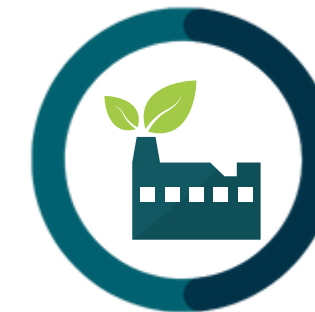
SAF



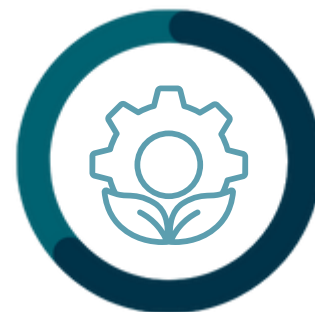
Battery Storage



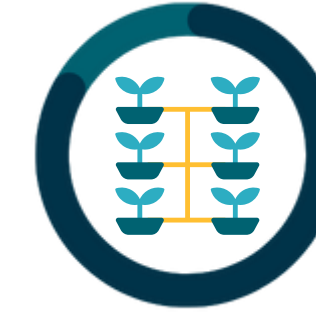
Data Storage



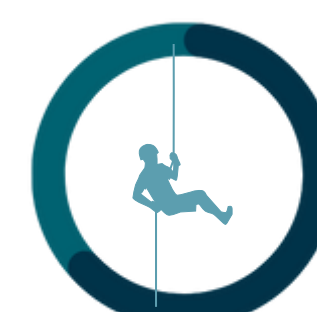
Giga Factory



Manufacturing



Vertical Farming



Leisure



Education



Ecology Park



Strategic Relationships & Investments

Infrastructure

Exploring partnerships to invest in a micro grid / railway / fibre / energy / tidal / leisure

Innovation

Energy Innovation
Tidal Innovation
PFA applications

Investment

Data Storage
Commercial Strategy
National Grid (New Sub-Station)



Current Activity

- Refining the Masterplan – Q4
- Business plan 2025-28
- Planning for Investment Events
- Updating Commercial Strategy
- Commence Demolition

