


NOTES:

LEGEND:
EXISTING ROUTE

P01	21FEB18	FIT FOR INFORMATION	MS	MT	GH
Rev	Date	Description	Drawn	Check	Approv

Vale of Glamorgan



PROJECT:
M4 JUNCTION
34 TO A48
WelTAG S2

Site

Client

Civic Offices
Hafon road
Barry
CF63 4RU
Phone +44 (0)1446 704 768
Fax
ccameron@valeofglamorgan.gov.uk
www.valeofglamorgan.gov.uk



Registered office:
Arcadis House
34 York Way
London
N1 9AB

Coordinating office:
Arcadis Cymru House
Fortran Road, St Mellons
Cardiff, CF3 0EY
Tel: 44 (0)29 2092 6700

www.arcadis.com

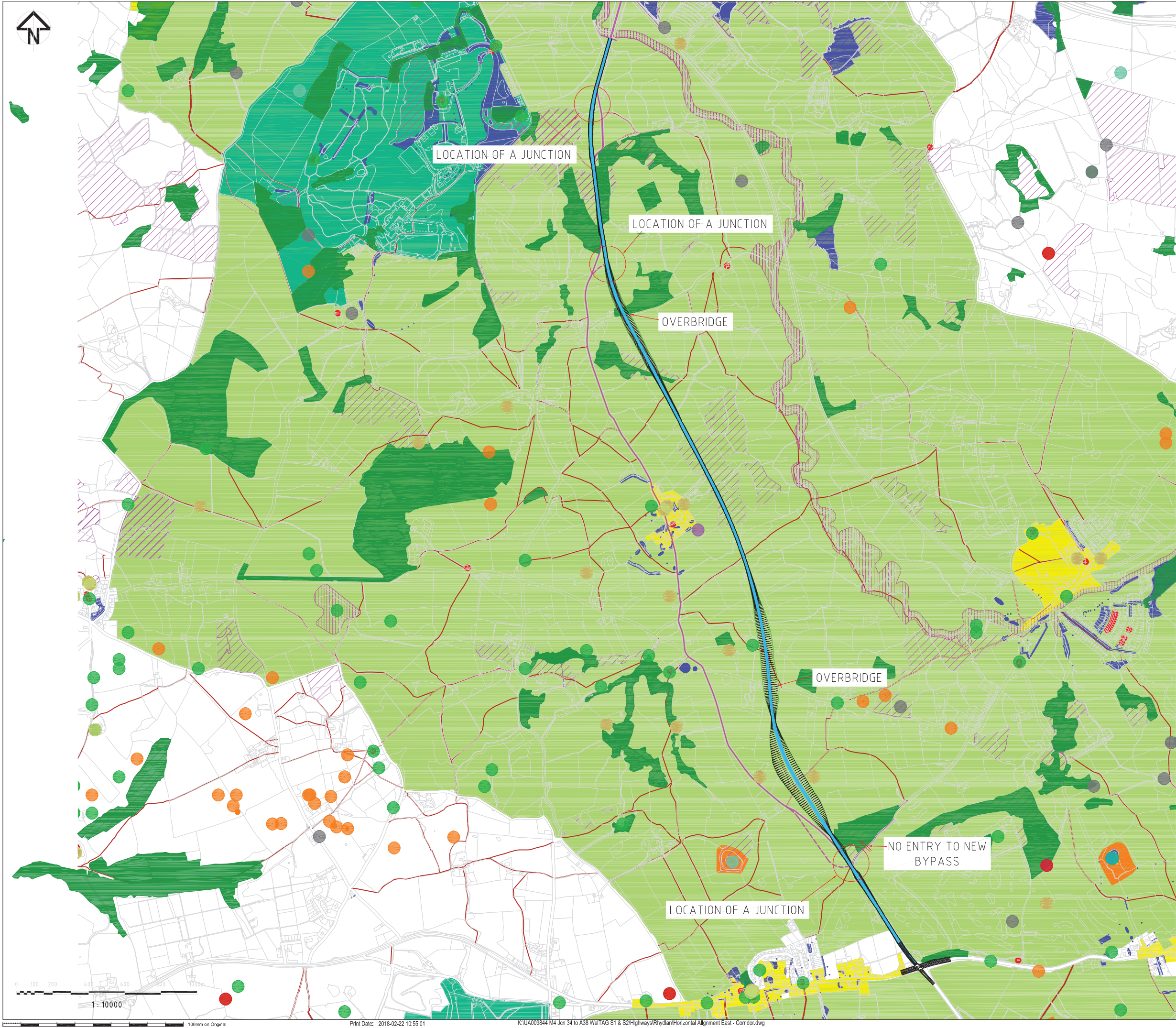
TITLE:
East Alignment

Designed	R. ELLIS	Signed	Date	21FEB18
Drawn	M. SMITH	Signed	Date	21FEB18
Checked	M. THOMAS	Signed	Date	21FEB18
Approved	G. HARRIS	Signed	Date	21FEB18
Scale:	1:10000	Datum:	AOD	
Original Size:	A1	Grid:	OS	
Suitability Code:	S2	Project Number:	10013270	

Suitability Description:
FIT FOR INFORMATION

Drawing Number:
10013270-ARC-XX-XX-DR-HE-0001

Revision:
P01



NOTES:

- LEGEND:**
- ARCHAEOLOGICAL FEATURES:**
- ROMAN
 - BRONZE AGE
 - NEOLITHIC
 - MEDIEVAL
 - POST MEDIEVAL
 - EARLY MEDIEVAL
 - IRON AGE
 - METHOLITHIC
 - MODERN
 - MULTI PERIOD
 - PREHISTORIC
 - UNKNOWN
- EXISTING ROUTE**
- PUBLIC RIGHT OF WAY**
- ECOLOGY AND NATURE CONSERVATION:**
- SITE OF SPECIAL SCIENTIFIC INTEREST
 - SITES OF IMPORTANCE FOR NATURE CONSERVATION
 - TREE PRESERVATION ORDER
 - SPECIAL LANDSCAPE AREAS
 - AIR QUALITY MANAGEMENT AREA
- DESIGNATED HERITAGE ASSETS:**
- SCHEDULED MONUMENTS
 - LISTED BUILDINGS
 - CONSERVATION AREA
 - PARKS AND GARDENS
 - ANCIENT WOODLAND

P01	21FEB18	FIT FOR INFORMATION	MS	MT	GH
Rev	Date	Description	Drawn	Check	Approv

Vale of Glamorgan



PROJECT:
M4 JUNCTION
34 TO A48
WeITAG S2

Site	Client
	Civic Offices Holton road Barry CF63 4RU Phone +44 (0)1446 704 768 Fax ccameron@valeofglamorgan.gov.uk www.valeofglamorgan.gov.uk



Registered office: Arcadis House 34 York Way London N1 9AB	Coordinating office: Arcadis Cymru House Fortran Road, St Mellons Cardiff, CF3 0EY Tel: 44 (0)29 2092 6700
--	--

www.arcadis.com

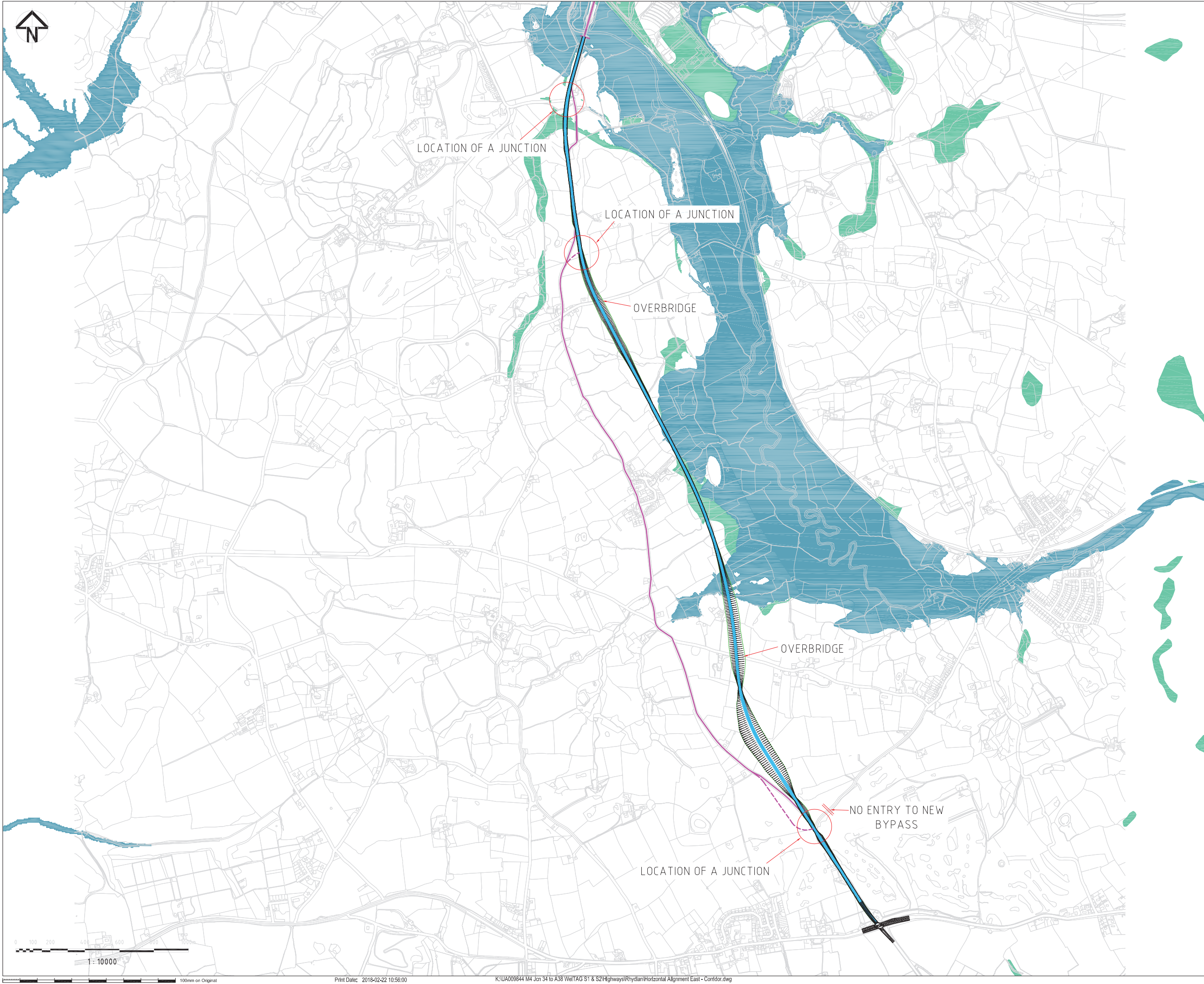
TITLE:

East Alignment
With Environmental Constraints

Designed	R. ELLIS	Signed	21FEB18
Drawn	M. SMITH	Signed	21FEB18
Checked	M. THOMAS	Signed	21FEB18
Approved	G. HARRIS	Signed	21FEB18
Scale:	1:10000	Datum:	AOD
Original Size:	A1	Grid:	OS
Suitability Code:	S2	Project Number:	10013270

Suitability Description:
FIT FOR INFORMATION

Drawing Number: 10013270-ARC-XX-XX-DR-HE-0002	Revision: P01
--	------------------



NOTES:

LEGEND:

- EXISTING ROUTE
- FLOOD RISK ZONE DATA:
- FLOOD ZONE B
- FLOOD ZONE C1
- FLOOD ZONE C2

P01	21FEB18	FIR FOR INFORMATION	MS	MT	GH
Rev	Date	Description	Drawn	Check	Approv

Vale of Glamorgan



PROJECT:
M4 JUNCTION
34 TO A48
WeITAG S2

Site	Client
	Civic Offices Holton road Barry CF63 4RU Phone +44 (0)1446 704 768 Fax ccameron@valeofglamorgan.gov.uk www.valeofglamorgan.gov.uk



Registered office:
Arcadis House
34 York Way
London
N1 9AB

Coordinating office:
Arcadis Cymru House
Fortran Road, St Mellons
Cardiff, CF3 0EY
Tel: 44 (0)29 2092 6700

www.arcadis.com

TITLE:

East Alignment
With Flood Zones

Designed	R. ELLIS	Signed	21FEB18
Drawn	M. SMITH	Signed	21FEB18
Checked	M. THOMAS	Signed	21FEB18
Approved	G. HARRIS	Signed	21FEB18
Scale:	1:10000	Datum:	AOD
Original Size:	A1	Grid:	OS
Suitability Code:	S2	Project Number:	10013270

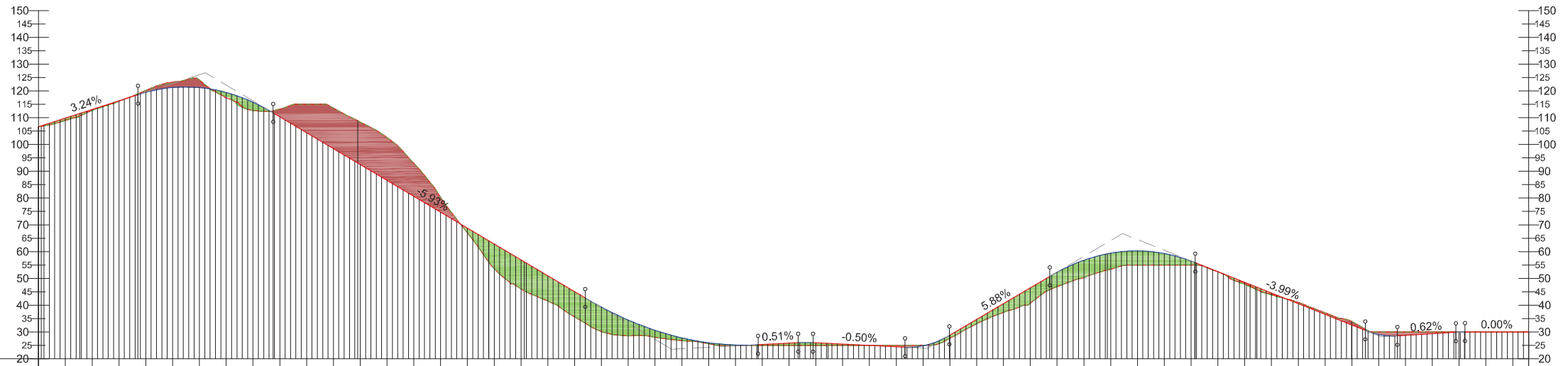
Suitability Description:

FIT FOR INFORMATION

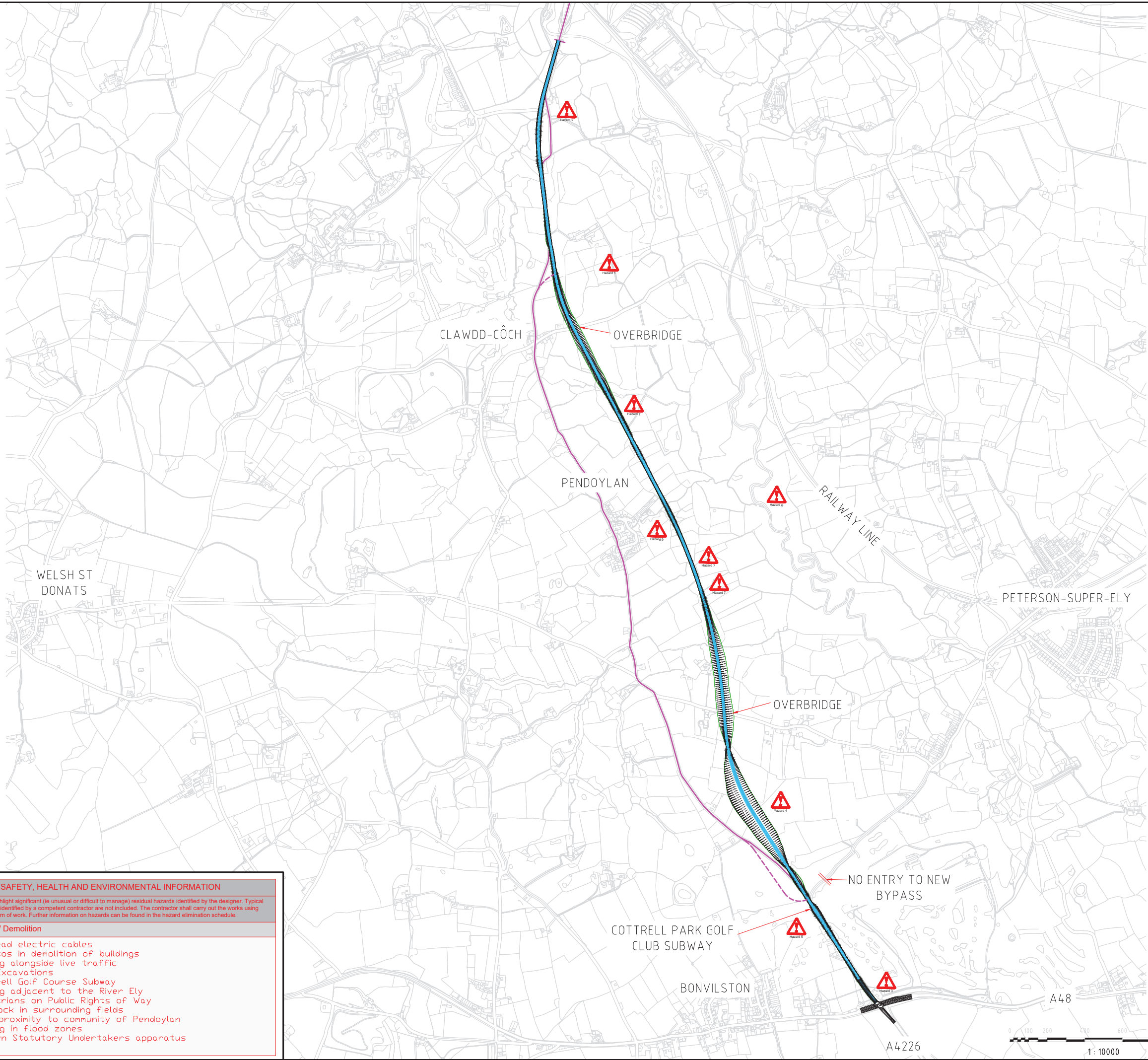
Drawing Number:
10013270-ARC-XX-XX-DR-HE-0003

Revision:
P01

East Alignment
SCALE: H 1:10000,V 1:1000
DATUM: 20.000



Chainage	00.000	100.000	200.000	300.000	400.000	500.000	600.000	700.000	800.000	900.000	1000.000	1100.000	1200.000	1300.000	1400.000	1500.000	1600.000	1700.000	1800.000	1900.000	2000.000	2100.000	2200.000	2300.000	2400.000	2500.000	2600.000	2700.000	2800.000	2900.000	3000.000	3100.000	3200.000	3300.000	3400.000	3500.000	3600.000	3700.000	3800.000	3900.000	4000.000	4100.000	4200.000	4300.000	4400.000	4500.000	4600.000	4700.000	4800.000	4900.000	5000.000	5100.000	5200.000	5300.000	5400.000	5500.000	5558.778																																																																																																																																																																																																																																																																																																																																																																																																																																																																																																																																																																																																																																																																																																																																																																																																									
Existing Ground Levels	106.588	108.917	112.614	116.092	120.180	123.059	124.092	118.022	112.646	113.211	115.000	113.589	108.381	102.606	92.958	80.241	67.019	62.849	53.650	46.121	41.516	35.642	30.178	28.571	27.974	26.766	25.588	25.000	25.000	25.000	25.000	25.000	25.051	25.000	27.596	33.063	37.315	40.716	46.920	56.772	59.429	60.267	59.287	55.000	55.000	55.000	52.452	47.646	43.748	40.941	37.040	33.928	30.000	30.000	30.000	30.000	30.000	30.000	30.000	30.000	30.000																																																																																																																																																																																																																																																																																																																																																																																																																																																																																																																																																																																																																																																																																																																																																																																																					
Proposed Levels	106.588	109.825	113.063	116.300	119.460	121.259	121.239	119.401	115.744	110.325	104.391	98.456	92.522	86.587	80.653	74.718	68.784	62.849	56.915	50.980	45.046	39.293	34.463	30.632	27.974	26.766	25.588	25.140	25.297	25.811	25.939	25.444	24.949	24.454	24.831	28.850	34.729	40.607	46.486	52.297	56.772	59.429	60.267	59.287	56.489	52.520	48.529	44.538	40.547	36.555	32.564	29.056	28.739	29.355	29.957	30.000	30.000	30.000	30.000	30.000	30.000	30.000	30.000	30.000																																																																																																																																																																																																																																																																																																																																																																																																																																																																																																																																																																																																																																																																																																																																																																																																		
Horizontal Geometry	R=1020.000 L=1036.332		R=1020.000 L=489.215				R=2880.000 L=1133.441				R=2600.000 L=165.723				R=5500.000 L=542.845				R=2600.000 L=218.297				R=5500.000 L=33.852				R=2600.000 L=237.999				R=5500.000 L=33.852				R=2600.000 L=237.999				R=5500.000 L=33.852				R=2600.000 L=237.999				R=5500.000 L=33.852				R=2600.000 L=237.999				R=5500.000 L=33.852				R=2600.000 L=237.999				R=5500.000 L=33.852				R=2600.000 L=237.999				R=5500.000 L=33.852				R=2600.000 L=237.999				R=5500.000 L=33.852				R=2600.000 L=237.999				R=5500.000 L=33.852				R=2600.000 L=237.999				R=5500.000 L=33.852				R=2600.000 L=237.999				R=5500.000 L=33.852				R=2600.000 L=237.999				R=5500.000 L=33.852				R=2600.000 L=237.999				R=5500.000 L=33.852				R=2600.000 L=237.999				R=5500.000 L=33.852				R=2600.000 L=237.999				R=5500.000 L=33.852				R=2600.000 L=237.999				R=5500.000 L=33.852				R=2600.000 L=237.999				R=5500.000 L=33.852				R=2600.000 L=237.999				R=5500.000 L=33.852				R=2600.000 L=237.999				R=5500.000 L=33.852				R=2600.000 L=237.999				R=5500.000 L=33.852				R=2600.000 L=237.999				R=5500.000 L=33.852				R=2600.000 L=237.999				R=5500.000 L=33.852				R=2600.000 L=237.999				R=5500.000 L=33.852				R=2600.000 L=237.999				R=5500.000 L=33.852				R=2600.000 L=237.999				R=5500.000 L=33.852				R=2600.000 L=237.999				R=5500.000 L=33.852				R=2600.000 L=237.999				R=5500.000 L=33.852				R=2600.000 L=237.999				R=5500.000 L=33.852				R=2600.000 L=237.999				R=5500.000 L=33.852				R=2600.000 L=237.999				R=5500.000 L=33.852				R=2600.000 L=237.999				R=5500.000 L=33.852				R=2600.000 L=237.999				R=5500.000 L=33.852				R=2600.000 L=237.999				R=5500.000 L=33.852				R=2600.000 L=237.999				R=5500.000 L=33.852				R=2600.000 L=237.999				R=5500.000 L=33.852				R=2600.000 L=237.999				R=5500.000 L=33.852				R=2600.000 L=237.999				R=5500.000 L=33.852				R=2600.000 L=237.999				R=5500.000 L=33.852				R=2600.000 L=237.999				R=5500.000 L=33.852				R=2600.000 L=237.999				R=5500.000 L=33.852				R=2600.000 L=237.999				R=5500.000 L=33.852				R=2600.000 L=237.999				R=5500.000 L=33.852				R=2600.000 L=237.999				R=5500.000 L=33.852				R=2600.000 L=237.999				R=5500.000 L=33.852				R=2600.000 L=237.999				R=5500.000 L=33.852				R=2600.000 L=237.999				R=5500.000 L=33.852				R=2600.000 L=237.999				R=5500.000 L=33.852				R=2600.000 L=237.999				R=5500.000 L=33.852				R=2600.000 L=237.999				R=5500.000 L=33.852				R=2600.000 L=237.999				R=5500.000 L=33.852				R=2600.000 L=237.999				R=5500.000 L=33.852				R=2600.000 L=237.999				R=5500.000 L=33.852				R=2600.000 L=237.999				R=5500.000 L=33.852				R=2600.000 L=237.999				R=5500.000 L=33.852				R=2600.000 L=237.999				R=5500.000 L=33.852				R=2600.000 L=237.999				R=5500.000 L=33.852				R=2600.000 L=237.999				R=5500.000 L=33.852				R=2600.000 L=237.999				R=5500.000 L=33.852				R=2600.000 L=237.999				R=5500.000 L=33.852				R=2600.000 L=237.999				R=5500.000 L=33.852				R=2600.000 L=237.999				R=5500.000 L=33.852				R=2600.000 L=237.999				R=5500.000 L=33.852				R=2600.000 L=237.999				R=5500.000 L=33.852				R=2600.000 L=237.999				R=5500.000 L=33.852				R=2600.000 L=237.999				R=5500.000 L=33.852				R=2600.000 L=237.999				R=5500.000 L=33.852				R=2600.000 L=237.999				R=5500.000 L=33.852				R=2600.000 L=237.999				R=5500.000 L=33.852				R=2600.000 L=237.999				R=5500.000 L=33.852				R=2600.000 L=237.999				R=5500.000 L=33.852				R=2600.000 L=237.999				R=5500.000 L=33.852				R=2600.000 L=237.999				R=5500.000 L=33.852				R=2600.000 L=237.999				R=5500.000 L=33.852				R=2600.000 L=237.999				R=5500.000 L=33.852				R=2600.000 L=237.999				R=5500.000 L=33.852				R=2600.000 L=237.999				R=5500.000 L=33.852				R=2600.000 L=237.999				R=5500.000 L=33.852				R=2600.000 L=237.999				R=5500.000 L=33.852				R=2600.000 L=237.999				R=5500.000 L=33.852				R=2600.000 L=237.999				R=5500.000 L=33.852				R=2600.000 L=237.999				R=5500.000 L=33.852				R=2600.000 L=237.999				R=5500.000 L=33.852				R=2600.000 L=237.999				R=5500.000 L=33.852				R=2600.000 L=237.999				R=5500.000 L=33.852				R=2600.000 L=237.999				R=5500.000 L=33.852				R=2600.000 L=237.999				R=5500.000 L=33.852				R=2600.000 L=237.999				R=5500.000 L=33.852				R=2600.000 L=237.999				R=5500.000 L=33.852				R=2600.000 L=237.999				R=5500.000 L=33.852				R=2600.000 L=237.999				R=5500.000 L=33.852				R=2600.000 L=237.999				R=5500.000 L=33.852				R=2600.000 L=237.999				R=5500.000 L=33.852				R=2600.000 L=237.999				R=5500.000 L=33.852				R=2600.000 L=237.999				R=5500.000 L=33.852				R=2600.000 L=237.999				R=5500.000 L=33.852				R=2600.000 L=237.999				R=5500.000 L=33.852				R=2600.000 L=237.999				R=5500.000 L=33.852				R=2600.000 L=237.999				R=5500.000 L=33.852				R=2600.000 L=237.999				R=5500.000 L=33.852				R=2600.000 L=237.999				R=5500.000 L=33.852				R=2600.000 L=237.999				R=5500.000 L=33.852				R=2600.000 L=237.999				R=5500.000 L=33.852</			



SAFETY, HEALTH AND ENVIRONMENTAL INFORMATION

The following notes highlight significant (ie unusual or difficult to manage) residual hazards identified by the designer. Typical hazards that should be identified by a competent contractor are not included. The contractor shall carry out the works using an approved safe system of work. Further information on hazards can be found in the hazard elimination schedule.

Decomissioning / Demolition

- Overhead electric cables
- Asbestos in demolition of buildings
- Working alongside live traffic
- Deep Excavations
- Cottrell Golf Course Subway
- Working adjacent to the River Ely
- Pedestrians on Public Rights of Way
- Livestock in surrounding fields
- Close proximity to community of Pendoylan
- Working in flood zones
- Unknown Statutory Undertakers apparatus

NOTES:

LEGEND:

EXISTING ROUTE

Rev	Date	Description	MS	MT	GH
P01	05MAR18	FIT FOR INFORMATION			

Vale of Glamorgan



PROJECT:
M4 JUNCTION
34 TO A48
WelTAG S2

Site	Client
	Civic Offices Hollon road Barry CF63 4RU Phone +44 (0)1446 704 768 Fax ccameron@valeofglamorgan.gov.uk www.valeofglamorgan.gov.uk



Registered office:
Arcadis House
34 York Way
London
N1 9AB

Coordinating office:
Arcadis Cymru House
Fortran Road, St Mellons
Cardiff, CF3 0EY
Tel: 44 (0)29 2092 6700

www.arcadis.com

TITLE:

East Alignment
Hazards

Designed	R. ELLIS	Signed	Date: 05MAR18
Drawn	M. SMITH	Signed	Date: 05MAR18
Checked	M. THOMAS	Signed	Date: 05MAR18
Approved	G. HARRIS	Signed	Date: 05MAR18
Scale:	1:10000	Datum:	AOD
Original Size:	A1	Grid:	OS
Suitability Code:	S2	Project Number:	10013270

Suitability Description:
FIT FOR INFORMATION

Drawing Number: 10013270-ARC-XX-XX-DR-HE-0009	Revision: P01
--	------------------