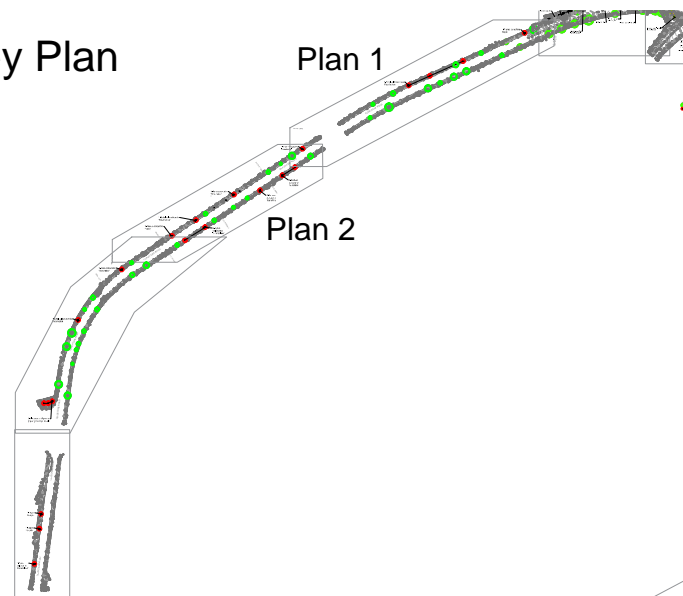


Key Plan



Plan 1

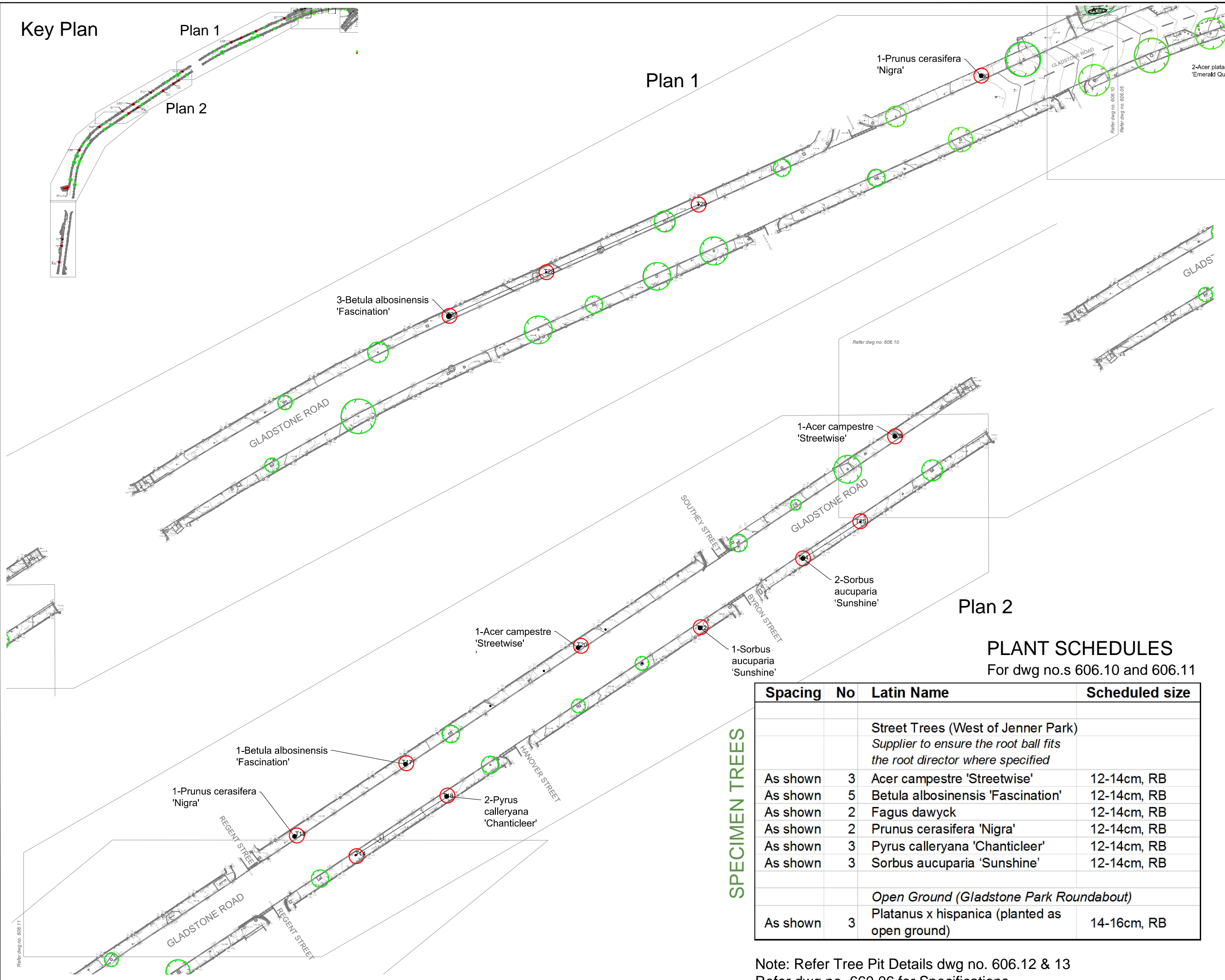
Plan 1

Plan 2

Notes:

Key:

- Existing trees
- New tree positions



Plan 2

PLANT SCHEDULES
For dwg no.s 606.10 and 606.11

SPECIMEN TREES

Spacing	No	Latin Name	Scheduled size
Street Trees (West of Jenner Park) <i>Supplier to ensure the root ball fits the root director where specified</i>			
As shown	3	Acer campestre 'Streetwise'	12-14cm, RB
As shown	5	Betula albosinensis 'Fascination'	12-14cm, RB
As shown	2	Fagus dawyck	12-14cm, RB
As shown	2	Prunus cerasifera 'Nigra'	12-14cm, RB
As shown	3	Pyrus calleryana 'Chanticleer'	12-14cm, RB
As shown	3	Sorbus aucuparia 'Sunshine'	12-14cm, RB
Open Ground (Gladstone Park Roundabout)			
As shown	3	Platanus x hispanica (planted as open ground)	14-16cm, RB

Note: Refer Tree Pit Details dwg no. 606.12 & 13
Refer dwg no. 660.06 for Specifications

Rev: A Date: 10.11.20 Trees omitted and schedule updated

HAIRE
LANDSCAPE
CONSULTANTS

UPPER BRECHFA LLANDEFALLE
BRECON POWYS LD3 0NG
Tel. 01874 754066
Email: miko@hairelandscapeconsultants.co.uk
Website: hairelandscapeconsultants.co.uk

Vale of Glamorgan

Client: Barry Greening

Project name: West of Jenner Park Street Trees Plans 1 and 2

Drawing site: 1:1000@A3 Date: Aug '20 Drawn by: - Cld by: -

Scale: 606/10 Rev: A